

MONTHLY MEMBERSHIP PROGRESS REPORT

District 49 B

Results as of: 9/30/2025

GMT:

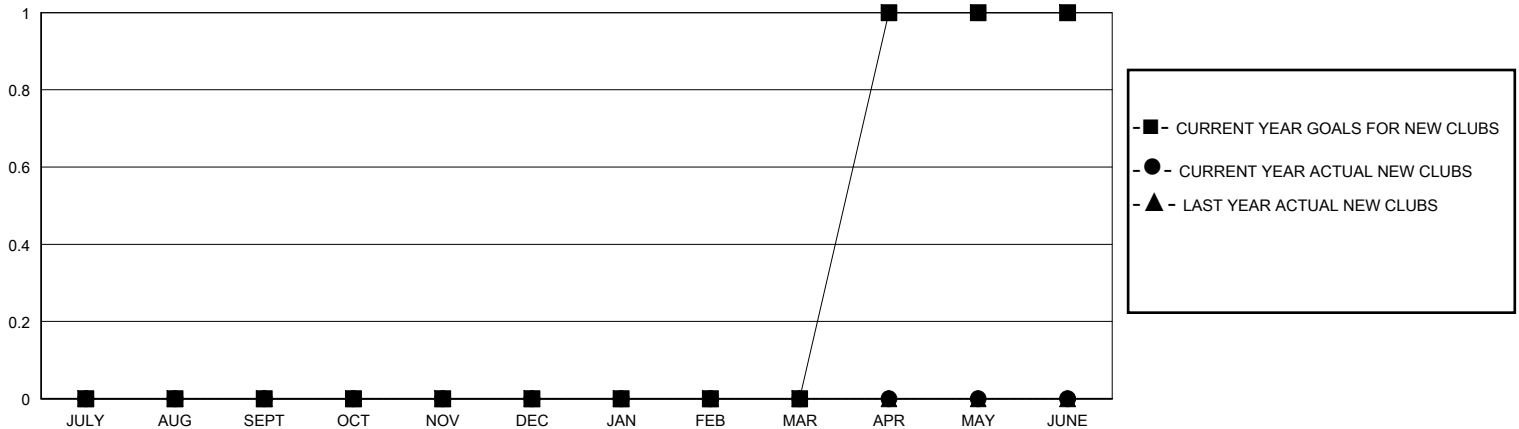
LOCATION ALASKA

GMT CA

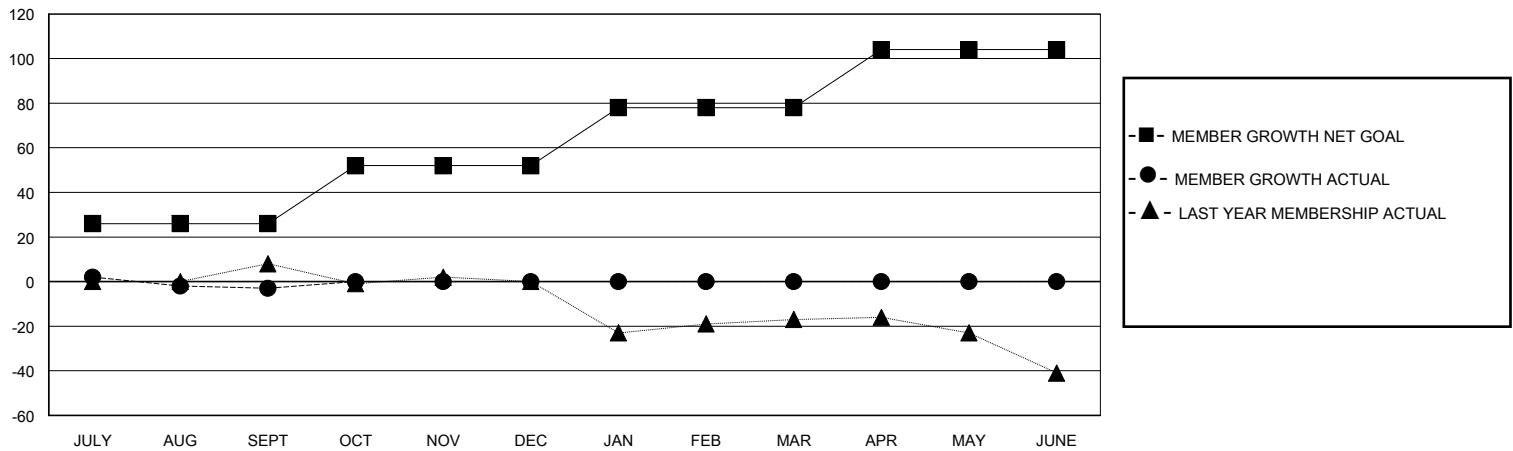
Clubs			
RESULTS FOR 2025-2026			
QUARTER	NEW CLUB GOAL	NEW CLUBS	DROPPED CLUBS
JULY/AUG/SEPT	0	0	0
OCT/NOV/DEC	0	0	0
JAN/FEB/MAR	0	0	0
APR/MAY/JUNE	1	0	0

Members			
RESULTS FOR 2025-2026			
QUARTER	MEMBER GROWTH NET GOAL	MEMBER GROWTH ACTUAL	DROPPED MEMBERS ACTUAL (including transfers)
JULY/AUG/SEPT	26	10	12
OCT/NOV/DEC	26	0	0
JAN/FEB/MAR	26	0	0
APR/MAY/JUNE	26	0	0

GOALS AND ACTUAL NEW CLUBS CUMULATIVE



GOALS AND ACTUAL MEMBERS CUMULATIVE



DROPPED CLUBS: 0

3 CLUBS OF 26 ADDED 1 OR MORE NEW MEMBERS

GENDER DISTRIBUTION

MALE 396 (56.41%)
FEMALE 306 (43.59%)

DROPPED MEMBERS

DECEASED	3
CLUB CANCELLED	0
OTHER	8
TOTAL	11

[CLICK HERE FOR CUMULATIVE MEMBERSHIP DATA](#)

TOTAL FAMILY UNIT MEMBERS	147
FAMILY MEMBERS PAYING HALF DUES	76